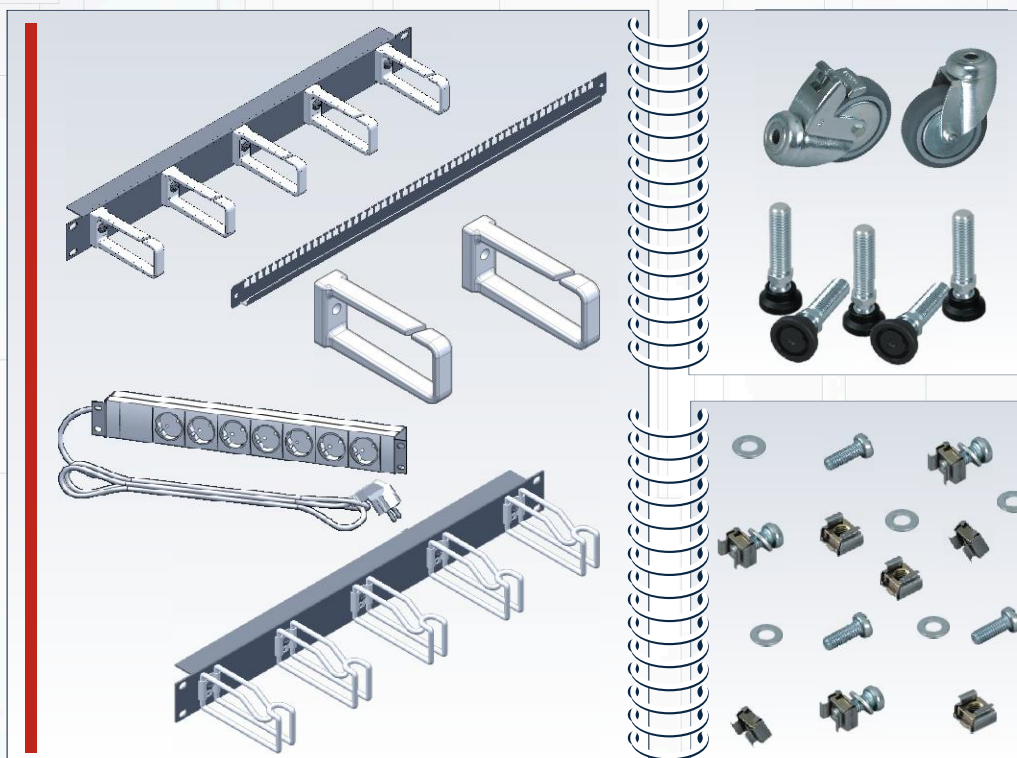
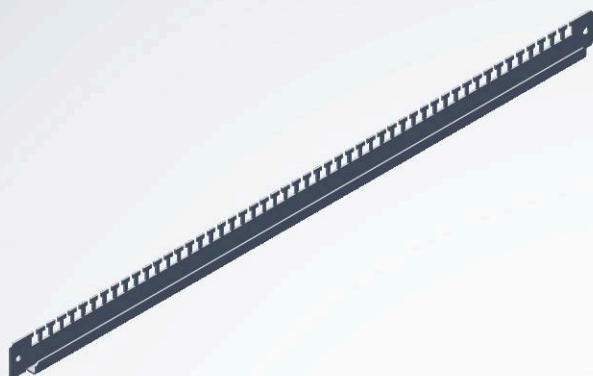


SHELVES*CABLE MANAGEMENT*MOUNTING SUPPORT*MISCELLANEOUS



Wide range of accessories have been designed to complement existing portfolio of 19" racks. Various components create installer comfortable environment during final assemblies and support necessary active devices and cabling operations.

DESIGNED FOR CABLE MANAGEMENT IN RACK SYSTEM



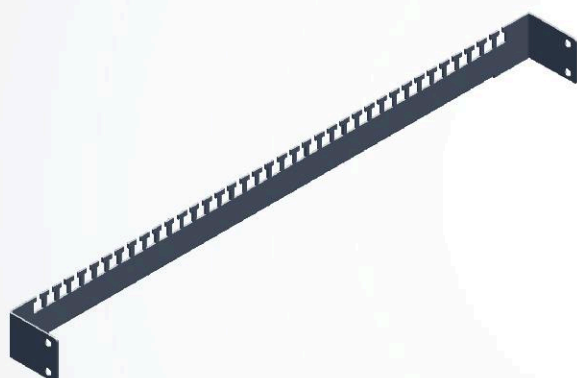
Side mounted cable clamp bracket

FEATURES

- material : steel
- mounting height : 1U
- used with cable ties (ordered separately)
- mounted to the main frame
- surface : zinc coated
- colour : RAL7024 or RAL7035

Cabinet's depth	Product no.
600 mm	CM-01-00-0600
800 mm	CM-01-00-0800
1000 mm	CM-01-00-1000

DESIGNED FOR CABLE MANAGEMENT IN THE REAR SECTION OF THE RACK



Rear mounted cable clamp bracket

FEATURES

- material : steel
- mounting height : 1U
- used with cable ties (ordered separately)
- mounted to the main frame in the rear section
- enable installation of Cable Strain Relief Grill
- surface : zinc coated
- colour : RAL7024 or RAL7035

Cabinet's depth	Product no.
600 mm	CM-02-00-0600
800 mm	CM-02-00-0800

DESIGNED FOR VERTICAL CABLES ORGANIZATION AT THE BACK OF THE CABINET



Cable strain relief grill

FEATURES

- mounted upright to Rear Mounted Cable Clamp Bracket
- material : steel
- used with cable ties (ordered separately)
- surface : powder coated
- colour : RAL7024 or RAL7035

Height	For cabinet heigh	Product no.
1050 mm	24U, 28U	CM-03-00-1050
1450 mm	36U	CM-03-00-1450
1850 mm	42U, 45U	CM-03-00-1850

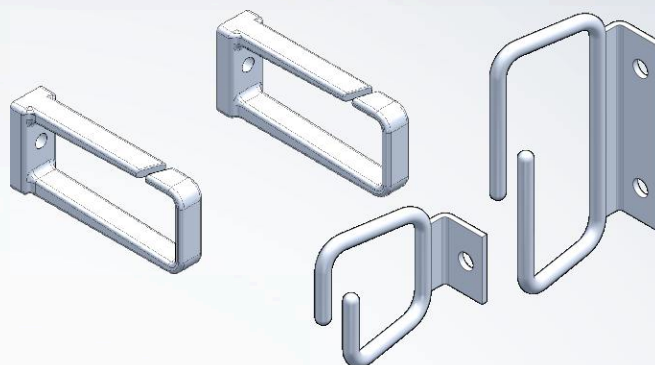


Vertical cable eye**FEATURES**

- material : polycarbonate or zinc coated steel
- mounting height : 1U
- attached to carrier bars

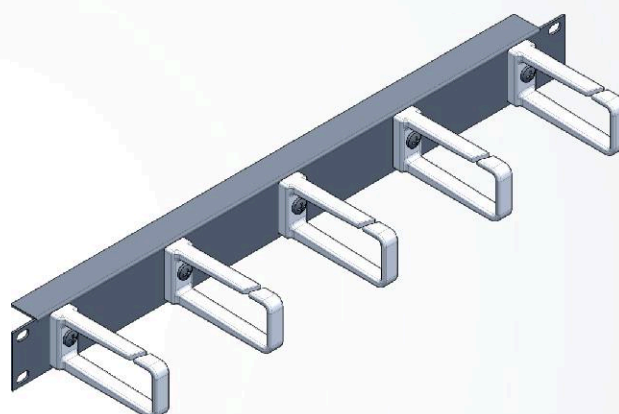
Depth	Material	Product no.
90 mm	polycarbonate	CM-04-01-0090
50 mm	zinc coated steel	CM-04-01-0050
50 mm	zinc coated steel	CM-04-02-0050

USED FOR CABLE ROUTING IN 19" RACK

**Cable management panel****FEATURES**

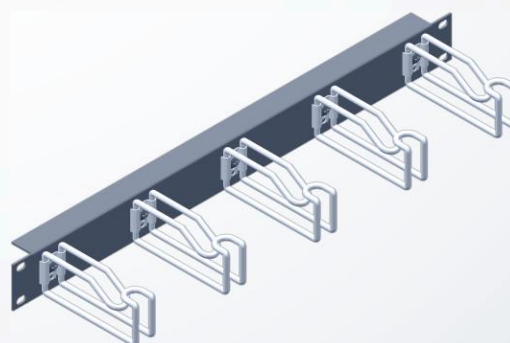
- material (panel) : steel
- material (eyes) : polycarbonate
- 19" mounting width
- mounting height : 1U
- 5 vertical plastic cable eyes
- surface : powder coated
- colour : RAL7024 or RAL7035

No. of cable eyes	Product no.
5	CM-05-19-1090

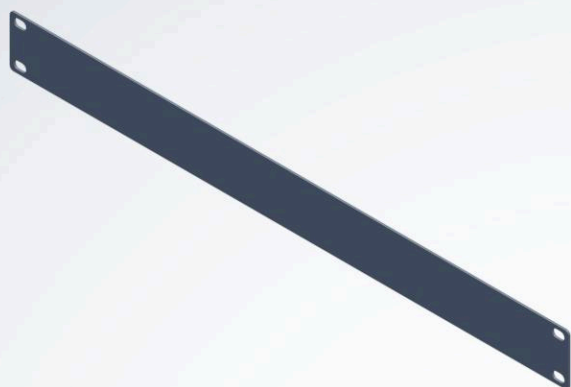
**Cable management panel****FEATURES**

- material (panel) : steel
- material (eyes) : zinc coated steel
- 19" mounting width
- 5 vertical cable eyes
- mounting height : 1U
- surface : powder coated
- colour : RAL7024 or RAL7035

No. of cable eyes	Product no.
5	CM-06-19-1070



CREATED FOR FILLING EMPTY POSITIONS IN RACK SYSTEM



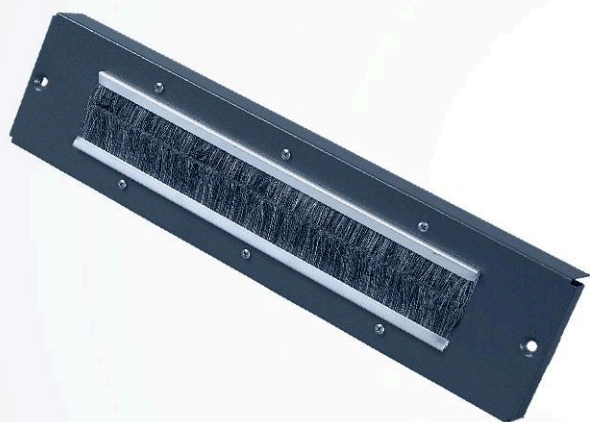
Masking panel

FEATURES

- height : 1U, 2U, 3U
- 19" mounting width
- material : steel
- surface : powder coated
- colour : RAL7024 or RAL7035

Mounting height	Product no.
1U	CM-07-19-0001
2U	CM-07-19-0002
3U	CM-07-19-0003
4U	CM-07-19-0004

SET OF BRUSHES MOUNTED DIRECTLY ON THE CABLE ENTRY TO PROTECT INTERIOR OF THE CABINET AGAINST DUST



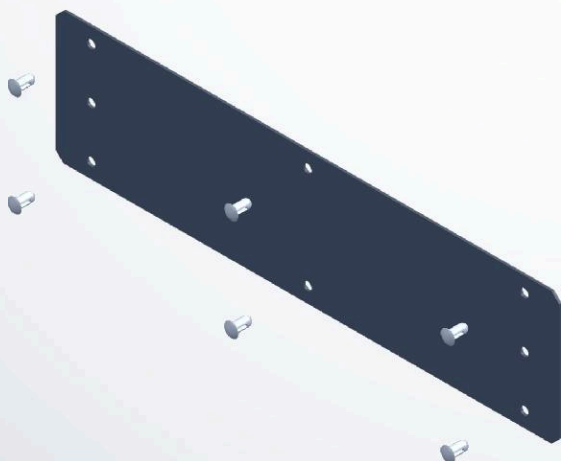
Set of brushes for cable entry

FEATURES

- easy mounted directly on the cable entry

Packs of	Product no.
2	CM-08-00-0300

PLATE FOR CABLE ENTRY : DESIGNED TO CLOSE THE CABLE OPENING IN THE REAR DOOR, ROOF OR BOTTOM



Rechangeable masking plate

FEATURES

- easy mounting
- enables easy adjustment of the size of cable entry opening
- material : steel
- surface : powder coated
- colour : RAL7024 or RAL7035

	Product no.
For cable entry	CM-09-00-0300



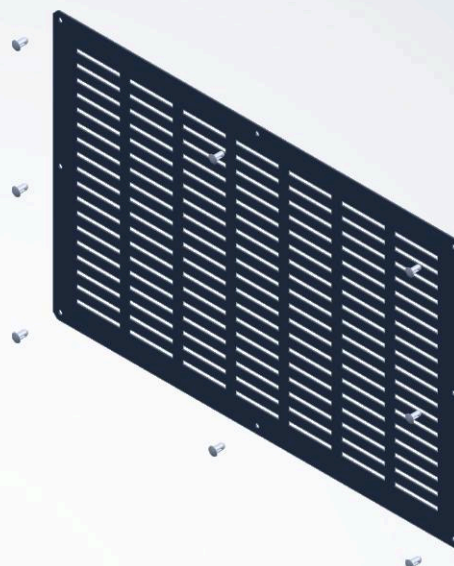
Bottom Cover Plate

CREATED FOR PROTECTING THE BOTTOM OF THE CABINET AGAINST DUST

FEATURES

- easy mounted to the bottom plate of freestanding rack
- full or perforated plate
- perforated plate delivered together with filtering material
- material : steel
- surface : powder coated
- colour : RAL7024 or RAL7035

Description	Product no.
Blank	CM-10-00-000B
Perforated (with filtering material)	CM-10-00-000P

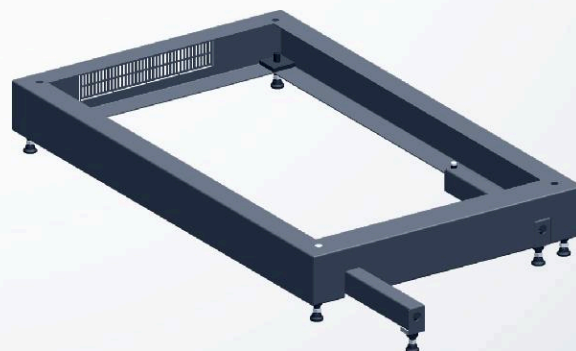
**100 mm high plinth for freestanding racks**

ENSURES ADDITIONAL SPACE FOR CABLE ENTRY FROM THE BOTTOM OF THE RACK. EQUIPPED WITH ANTI-TIP FEET INCREASES STABILITY OF THE SERVER RACK

FEATURES

- easy mounting to the bottom of the rack
- 100 mm height
- perforated walls
- plinth dedicated for server racks equipped with pull-out anti-tip feet
- material : steel
- surface : powder coated
- colour : RAL7024 or RAL7035

Dimensions	Anti-tip Feet	Product No.
600 mm x 600 mm	NO	CM-11-00-0606
600 mm x 800 mm	NO	CM-11-00-0608
800 mm x 800 mm	NO	CM-11-00-0808
600 mm x 1000 mm	YES	CM-11-01-0610
800 mm x 1000 mm	YES	CM-11-01-0810





brand of PAREO POLSKA

PAREO POLSKA

Manufacturing Facility ZPPL-0 :
BOROWA 465
39-305 BOROWA / POLAND

System Integration Facility ZPPL-1 :
BOROWA 104 / 4
39-305 BOROWA / POLAND

Manufacturing Facility ZPPL-2 :
BOROWA 104 / 5
39-305 BOROWA / POLAND

Tel.: +48 (0) 17 583 13 52
Tel.: +48 (0) 17 581 53 41
Fax: +48 (0) 17 583 13 52

[http:// www.PAREO-POLSKA.com](http://www.PAREO-POLSKA.com)
e-mail: info@PAREO-POLSKA.com